

# Always at the right moment.

## ATE brake drums with bearings: prescribed tightening torques.

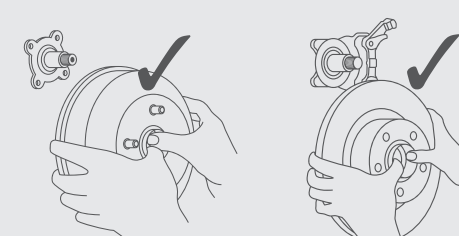


Manufacturer	Model	ATE article no.	Range ID	Range name	from	to	Qual/Col/Text	Tightening torques wheel bearings [Nm]	
AUDI	50 (74-78)	24.0218-0707.2	427	50 (B6)	01.08.1974	01.07.1978	-	Turn the lock nut until the wheel bearing freplay clearance is reached.	
	80 (72-87)	24.0220-0718.2	23	80 (B1, B5, B2)	01.08.1978	01.12.1986	Center nut	Turn the lock nut until the wheel bearing freplay clearance is reached.	
	Coupe (81-88)	24.0218-0707.2	191	Coupe (B1, B5)	01.07.1980	01.10.1988	-	Turn the lock nut until the wheel bearing freplay clearance is reached.	
	Coupe (81-96)	24.0220-0718.2	199	Coupe (B9, B8)	01.10.1988	01.12.1996	-	Turn the lock nut until the wheel bearing freplay clearance is reached.	
CITROEN	C2 (03-09)	24.0220-3729.2	2558	C2 (JM)	01.09.2003	-	Center nut	300	
	C3 (02-09)	24.0220-3729.2	2424	C3 I (FC)	01.02.2002	-	Center nut	200	
	C3 II (09-), 207	24.0222-9701.2	8659	C3 II (SC)	01.11.2009	-	Center nut for brake drum ø 203 mm	245	
	C3 II (09-), 207	24.0222-9701.2	8659	C3 II (SC)	01.11.2009	-	Center nut for brake drum ø 228 mm	312	
	C3 Pluriel (03-10)	24.0220-3729.2	2551	C3 Pluriel (HB)	01.05.2003	-	Center nut	200	
	DS3 (09-)	24.0222-9701.2	8697	DS3 (SA)	01.11.2009	01.07.2015	Center nut for brake drum ø 203 mm	203	
	DS3 (09-)	24.0222-9701.2	8697	DS3 (SA)	01.11.2009	01.07.2015	Center nut for brake drum ø 228 mm	312	
	DS3 Convertible (13-)	24.0222-9701.2	10081	DS3 Convertible (SB)	01.01.2013	01.07.2015	Center nut for brake drum ø 203 mm	203	
	DS3 Convertible (13-)	24.0222-9701.2	10081	DS3 Convertible (SB)	01.01.2013	01.07.2015	Center nut for brake drum ø 228 mm	312	
	DACIA	Logan (LS) (04-13)	24.0220-3721.2	3885	LOGAN (LS)	01.09.2004	-	M20 center nut	175
Logan Estate (KS) (04-13)		24.0220-3721.2	4896	LOGAN MCV (KS)	01.02.2007	-	M24 center nut	280	
Logan Sedan (LS) (04-13)		24.0220-3721.2	3885	LOGAN (LS)	01.09.2004	-	M20 center nut	175	
FORD	Escort VII (95-00)	24.0218-0724.2	796	ESCORT VII (GAL, AAL, ABL)	01.01.1995	01.10.2002	Center nut	260	
	Escort V/Orion (91-94)	24.0218-0724.2	366	ESCORT VI Notchback (GAL)	01.08.1993	01.01.1995	Center nut	260	
	Fiesta III (89-96)	24.0218-0724.2	405	FIESTA III (GFJ)	01.01.1989	01.01.1997	Center nut	250	
	Fiesta IV (96-02)	24.0218-0724.2	800	FIESTA IV (JA, JB)	01.08.1995	01.09.2002	Center nut	235	
	Fiesta V (02-08)	24.0220-3726.2	2396	FIESTA V (JH, JD)	01.11.2001	01.03.2010	Center nut	235	
	Fusion (02-12)	24.0220-3726.2	2465	FUSION (JU)	01.08.2002	01.12.2012	Center nut	235	
	KA I (96-08)	24.0218-0724.2	891	KA (RB)	01.09.1996	01.11.2008	Center nut	235	
	Puma (97-01)	24.0218-0724.2	1680	PUMA (EC)	01.03.1997	01.06.2002	Center nut	235	
	KIA	Rio I (00-05)	24.0220-0706.2	2354	RIO Notchback (DC)	01.09.2000	01.02.2005	Center nut	adjust until free from play
		MAZDA	121 (96-03)	24.0218-0724.2	830	121 III (JASM, JB5M)	01.03.1996	01.04.2003	Center nut
OPEL	Corsa A/Vauxhall Nova (83-92)	24.0220-0712.2	181	CORSA A Hatchback (93, 94, 98, 99)	01.09.1982	01.03.1993	Level 01	25	
	Corsa A/Vauxhall Nova (83-92)	24.0220-0712.2	181	CORSA A Hatchback (93, 94, 98, 99)	01.09.1982	01.03.1993	Level 02	Loosen the nut until the lock washer can be moved.	
	Corsa B/Vauxhall Corsa (93-00)	24.0220-0712.2	186	CORSA B (73, 78, 79)	01.03.1993	01.12.2002	Center nut level 01	25	
	Corsa B/Vauxhall Corsa (93-00)	24.0220-0712.2	186	CORSA B (73, 78, 79)	01.03.1993	01.12.2002	Center nut level 02	Loosen the nut until the lock washer can be moved.	
	Corsa C/Vauxhall Corsa MK II (00-06)	24.0220-0738.2	2269	CORSA C (F08, F68)	01.09.2000	01.12.2009	Center nut	175	
	Tigra/Vauxhall Tigra (94-00)	24.0220-0712.2	1469	TIGRA (75)	01.07.1994	01.12.2000	Center nut level 01	25	
	Tigra/Vauxhall Tigra (94-00)	24.0220-0712.2	1469	TIGRA (75)	01.07.1994	01.12.2000	Center nut level 02	Loosen the nut until the lock washer can be moved.	
PEUGEOT	Vauxhall Tigra TwinTop (04-09)	24.0220-0738.2	2680	TIGRA TwinTop	01.06.2004	-	Center nut	175	
	1007 (05-11)	24.0220-3729.2	3887	1007 (KM)	01.04.2005	-	Center nut	300	
	206 (98-09)	24.0220-3729.2	1541	206 Hatchback (2A/C)	01.08.1998	-	Center nut	200	
	206 Plus (09-13)	24.0220-3729.2	8896	206+ (T3E)	01.01.2009	-	Center nut	230	
	206 SW (02-07)	24.0220-3729.2	2478	206 SW (2E/K)	01.07.2002	-	Center nut	200	
	207 Sedan (06-12)	24.0222-9701.2	9281	207 Notchback	01.12.2007	-	Center nut	300	
	RENAULT	Clio II Van (5B) (98-12)	24.0220-3721.2	2386	CLIO II Van (S80/1/2)	01.09.1998	-	Center nut	175
		Mégane I Convertible (EA) (96-03)	24.0220-3721.2	1211	MÉGANE I Convertible (EA0/1)	01.10.1996	01.08.2003	Center nut	175
		Mégane I Classic (LA) (96-02)	24.0220-3721.2	880	MÉGANE I Classic (LA0/1)	01.09.1996	01.08.2008	Center nut	175
		Mégane I Coach (DA) (95-03)	24.0220-3721.2	820	MÉGANE I Coach (DA0/1)	01.03.1996	01.08.2003	Center nut	175
Mégane I Sedan 3-/5-door (BA/SA) (96-02)		24.0220-3721.2	812	MÉGANE I (BA0/1)	01.08.1996	01.12.2004	Center nut	175	
Thalia I (LB) (98-)		24.0220-3721.2	2456	THALIA I (LB0/1/2)	01.02.1998	-	Center nut	175	
Thalia II/Symbol (LU) (08-)		24.0220-3721.2	9082	THALIA II (LU1/2)	01.09.2008	-	Center nut	175	
Twingo I Sedan (C06) (93-07)		24.0220-3721.2	466	TWINGO I (C06)	01.03.1993	01.10.2012	Center nut	170	
Twingo II (CNO) (07-14)		24.0220-3737.2	4892	TWINGO II (CNO)	01.03.2007	-	Center nut	175	
SEAT		Arosa (6H) (97-05)	24.0218-0707.2	1212	AROSA (6H)	01.05.1997	01.06.2004	up to 2008/08 center nut	Turn the lock nut until the wheel bearing freplay clearance is reached.
	Cordoba I (93-99)	24.0218-0707.2	90	CORDOBA (6K1, 6K2)	01.02.1993	01.10.1999	-	Turn the lock nut until the wheel bearing freplay clearance is reached.	
	Cordoba I (93-99)	24.0220-0718.2	90	CORDOBA (6K1, 6K2)	01.02.1993	01.10.1999	-	Turn the lock nut until the wheel bearing freplay clearance is reached.	
	Ibiza II (93-99)	24.0218-0707.2	563	IBIZA II (6K1)	01.03.1993	01.08.1999	M16 center nut	Turn the lock nut until the wheel bearing freplay clearance is reached.	
	Ibiza II (93-99)	24.0220-0718.2	563	IBIZA II (6K1)	01.03.1993	01.08.1999	M16 center nut	Turn the lock nut until the wheel bearing freplay clearance is reached.	
	Toledo I (1L) (91-98)	24.0218-0707.2	403	TOLEDO I (1L)	01.01.1991	01.10.1999	-	Turn the lock nut until the wheel bearing freplay clearance is reached.	
	Toledo I (1L) (91-98)	24.0220-0718.2	403	TOLEDO I (1L)	01.01.1991	01.10.1999	-	Turn the lock nut until the wheel bearing freplay clearance is reached.	

Manufacturer	Model	ATE article no.	Range ID	Range name	from	to	Qual/Col/Text	Tightening torques wheel bearings [Nm]
SKODA	Favorit (781) (87-95)	24.0220-0718.2	392	FAVORIT (781)	01.05.1989	01.09.1994	-	Turn the lock nut until the wheel bearing freplay clearance is reached.
	Felicia II (6U) (98-01)	24.0220-0718.2	1777	FELICIA II (6U1)	01.01.1998	01.06.2001	-	Turn the lock nut until the wheel bearing freplay clearance is reached.
	Felicia Pick-up (797) (97-00)	24.0220-0718.2	1706	FELICIA I Pick-up (6UF, 6U7)	01.10.1995	01.04.2002	-	Turn the lock nut until the wheel bearing freplay clearance is reached.
	Forman (785) (91-95)	24.0220-0718.2	420	FAVORIT Forman (785)	01.06.1988	01.06.1995	-	Turn the lock nut until the wheel bearing freplay clearance is reached.
	Pick-up (93-95)	24.0220-0718.2	1776	FAVORIT Pick-up (787)	01.06.1992	01.06.1997	-	Turn the lock nut until the wheel bearing freplay clearance is reached.
VALUXHALL	Corsa (93-00)	24.0220-0712.2	1232	CORSA Mk I (B)	01.12.1992	01.09.2000	Center nut level 01	25
	Corsa (93-00)	24.0220-0712.2	1232	CORSA Mk I (B)	01.12.1992	01.09.2000	Center nut level 02	Loosen the nut until the lock washer can be moved.
	Corsa Mk II (00-06)	24.0220-0738.2	2275	CORSA Mk II (C) (W5L, F08)	01.08.2000	01.10.2006	Center nut	175
	Nova (83-92)	24.0220-0712.2	1231	NOVA	01.09.1982	01.02.1993	Level 01	25
	Nova (83-92)	24.0220-0712.2	1231	NOVA	01.09.1982	01.02.1993	Level 02	Loosen the nut until the lock washer can be moved.
VW	Tigra (94-00)	24.0220-0712.2	1237	TIGRA Mk I (F07)	01.07.1994	01.12.2000	Center nut level 01	25
	Tigra (94-00)	24.0220-0712.2	1237	TIGRA Mk I (F07)	01.07.1994	01.12.2000	Center nut level 02	Loosen the nut until the lock washer can be moved.
	Tigra TwinTop (04-09)	24.0220-0738.2	2681	TIGRA TwinTop	01.06.2004	01.08.2009	Center nut	175
	Caddy Pick-up (97-02)	24.0220-0718.2	1715	CADDY II Pick-up (9U7)	01.06.1996	01.12.2000	Center nut	adjust until free from play
	Derby/Polo Notchback (77-88)	24.0218-0707.2	264	DERBY (86)	01.02.1977	01.09.1981	-	Turn the lock nut until the wheel bearing freplay clearance is reached.
	Derby/Polo Notchback (77-88)	24.0218-0707.2	269	DERBY (86C, 80)	01.08.1981	01.12.1984	-	Turn the lock nut until the wheel bearing freplay clearance is reached.
	Golf I (74-83)	24.0218-0707.2	491	GOLF I (I7)	01.04.1974	01.12.1985	Center nut	adjust until free from play
	Golf I Convertible (79-93)	24.0218-0707.2	482	GOLF I Convertible (I55)	01.01.1979	01.08.1993	Center nut	adjust until free from play
	Golf II (84-93)	24.0220-0718.2	494	GOLF II (I9E, I9I)	01.08.1983	01.12.1992	Center nut	adjust until free from play
	Golf III (92-97)	24.0220-0718.2	499	GOLF III (I1H1)	01.08.1991	01.07.1998	Center nut	adjust until free from play

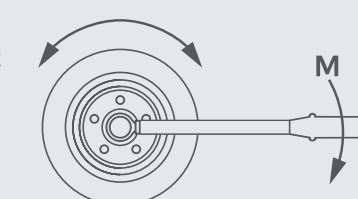
### Important information

During installation, make sure that the wheel bearing is not tilted.

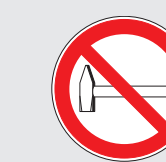


**Caution:** if a wheel bearing has been pulled apart or the bearing inner ring pressed out during assembly, the wheel bearing is defective and may no longer be installed.

**Caution:** during the tightening process the brake disc/brake drum must be turned! This prevents damage to the bearing shells.



The hub nut must be put on and tightened by hand. Under no circumstances use an impact wrench!



Do not exert any mechanical force during installation: do not use hammers or other similar tools!



Protect the encoder wheel from strong magnetic fields! Damage could otherwise occur, making the wheel bearing unusable.



Brakethrough Technology